



CASCADE COPPER

Copper Focused Exploration in British Columbia

A Growth Stage Exploration Company

FIRE MOUNTAIN PROJECT
TECHNICAL PRESENTATION
MARCH 2023

FORWARD LOOKING STATEMENTS



- **Forward-Looking Statement** This presentation contains certain statements that may constitute forward-looking information under applicable securities laws. All statements, other than those of historical fact, which address activities, events, outcomes, results, developments, performance or achievements that Cascade Copper anticipates or expects may or will occur in the future (in whole or in part) should be considered forward-looking information. In some cases, forward-looking information is identified by the use of terms and phrases such as “anticipate”, “believe”, “could”, “estimate”, “expect”, “intend”, “may”, “plan”, “predict”, “project”, “will”, “would”, and similar terms and phrases, including references to assumptions. Such information may involve, but is not limited to, comments with respect to strategies, expectations, planned operations or future actions. These forward-looking statements are based on currently available competitive, financial and economic data and operating plans as of the date of this presentation but are subject to known and unknown risks, uncertainties and other factors that may cause actual results, performance or achievements or industry results to be materially different from those expressed or implied by such forward-looking information. Such factors are based on information currently available to Cascade Copper, including information obtained from third-party industry analysts and other third-party sources, and are based on management’s current expectations regarding future growth, results of operations, future capital (including the amount, nature and sources of funding thereof) and expenditures. The forward-looking information contained in this presentation is expressly qualified by this cautionary statement
- A number of risks, uncertainties and other factors could cause actual results to differ materially from the results discussed in the forward-looking information, including, but not limited to, the following: risks associated with reliance on key personnel; financial health of Cascade Copper’s and its related cash flows; general industry and market conditions and growth rates; failure to realize anticipated benefits of acquisitions and monetization opportunities; legislative and regulatory developments; reliance on major customers; general economic conditions and levels of economic activity including interest rate and currency exchange rate fluctuation; current global financial conditions; failure to realize on growth initiatives; financing risks; degree of competition in the industry; risks associated with the development of projects; changes in employee relations; control of costs and expenses including inability to repay maturing debt and to fund capital expenditures and future acquisitions and dependence on information systems and technology; retaining main customers risk.
- Forward-looking information reflects Cascade Copper’s current beliefs and is based on information currently available to Cascade Copper and on assumptions it believes to be reasonable. In some instances, material factors or assumptions are discussed in this presentation in connection with statements containing forward-looking information. Such material factors and assumptions include, but are not limited to: the Company’s ability to execute on its business plan; the continued success of business development activities; new assets or projects will continue to be added to the Company’s portfolio. The forward-looking information is made as of the date of this presentation and Cascade Copper assumes no obligation to update or revise such information to reflect new events or circumstances, except as may be required by applicable law. Because of the risks, uncertainties and assumptions contained herein, prospective investors should not read forward-looking information as guarantees of future performance or results and should not place undue reliance on forward-looking information. Nothing in this presentation is, or should be relied upon as, a promise or representation as to the future.
- There is no warranty or guarantee given by any person as to any forecast or financial outlook contained herein. In addition, such forecasts and financial outlooks reflect various assumptions by Cascade Copper. Although Cascade Copper believes these assumptions to be reasonable, Cascade Copper can give no assurance that such assumptions will prove to be correct and readers are cautioned that such assumptions may prove to be incorrect. The actual results achieved will vary from the forecast or financial outlook results and the variations may be material. There is no guarantee that any forecasts or financial outlooks will be achieved in whole or in part. To the extent any forward-looking statements contain forecasts or financial outlooks, such information is being provided solely to enable a reader to assess Cascade Copper’s financial condition and its operational history and experience in the resource exploration industry. Readers are cautioned that this information may be not appropriate for any other purpose, including investment decisions.
- Industry and other statistical data presented in this presentation, except where otherwise noted, have been compiled from sources and participants which, although not independently verified by Cascade Copper, are considered by Cascade Copper to be reliable sources of information. References in this presentation to research reports or to articles and publications should be not construed as depicting the complete findings of the entire referenced report or article.
- Data for the Fire Mountain Project was retrieved mainly from Torr Resources, Tocvan Ventures, and C3 Metals’s databases and internal and government reports. Torr Resources was operator on the Fire Mountain West project from 2018 to 2020, while C3 Metals, in various corporate iterations and Tocvan were operators of the Fire Mountain East (Rogers Creek South) from 2010 to 2022. Cascade Copper had access to the entire database and was confident that the reporting of the information was to industry standard practice. The Company has not completed sufficient work to verify all the historic information on the Fire Mountain Project.
- The Qualified Person responsible for the technical information in this presentation is Shannon Baird P. Geo., Cascade Copper’s Vice President Exploration, who has approved the technical information included herein. Any reference to historical estimates and resources should not be relied upon. These are not current and a Q.P. has not done sufficient work to classify these historical estimate and Cascade Copper Inc. is not treating the historical estimate as a current resource estimate.

BOARD AND MANAGEMENT TEAM



Jeffrey Ackert, *BSc.*
President, CEO & Director

Mr. Ackert began his career as a regional geologist with St. Joe Minerals, Bond Gold Canada and LAC Minerals in the 1980s. In 1990 he became mine geologist at LAC Minerals' Golden Patricia Mine (Barrick Gold Corp after 1994) where he specialized in production and exploration. In 1996 he was appointed VPEx for Orezone Resources Inc. focusing on West Africa and was subsequently named VP Technical Services in 2005.

Mr. Ackert served as a senior officer of publicly listed C3 Metals, a Canadian based exploration company focused on the discovery and development of large copper-gold deposits with properties in Peru, Jamaica and Canada.

Mr. Ackert holds a BSc. In Geology from the University of Toronto.

Shannon Baird *P.Geo*
VP Exploration & Director

Mr. Baird has over 18 years of management, technical, evaluation, and leadership experience in Cu-Au, Au-Ag, and Ni-Cu-PGE base metals exploration and mine geology across the Americas and Caribbean. Mr. Baird is a highly experienced exploration geologist and manager with a proven track record of identifying, discovering and exploring high-quality projects from the ground up.

Mr. Baird holds an Applied MSc. in Economic Geology with a focus on Exploration from Laurentian University.

Yanika Silina *CPA CMA*
Chief Financial Officer

Ms. Silina is an experienced Accountant with a demonstrated history of working in the accounting industry. Since 2008, Ms. Silina has been a Senior Accountant with Da Costa Management Corp., a Vancouver-based company that provides management services to private and public companies. Since 2014, Ms. Silina has been the CFO, Secretary, Treasurer and a Director of Cell MedX Corp., an OTC Pink listed company, since 2017, CFO of Stuhini Exploration Ltd., a TSXV listed company, since 2014, a Director of Kesselrun Resources Ltd., a TSXV listed company and since July 2022, CFO of Tocvan Ventures Corp, a CSE listed company.

Ms. Silina received a Diploma in Management Studies from the University of Thompson Rivers from Kamloops, British Columbia (2011) and her CPA, CMA designation in 2015.

Darcy Christian *P.Geo*
Director

Mr. Christian has been the President of Braidplain Consulting Ltd., a privately owned consulting company since 2017 and since April 1, 2021, Vice President, Operations, Corporate Secretary and a Director of Ashley Gold Corp, a CSE listed junior mining company. From 2018 until 2020, Principal Geoscientist with IHS Markit and from 2015 until 2016, Business Development Manager with Finder Exploration Canada.

Mr. Christian holds a Bachelor of Science (Geoscientist) degree from the University of Alberta and a professional designation with the Association of Professional Engineers and Geoscientists of Alberta (APEGA). Mr. Christian also holds a Master of Science in Geoscience from the University of London.

Hon. Alison Redford *QC, ICD. D*
Director

Ms. Redford is a Canadian Lawyer. Ms. Redford serves as an advisor to national governments and ministries in emerging economies on regulatory reform to promote transparency and investor confidence. She provides independent advice on the creation of regulatory regimes related to climate, social and governance sustainability. Separately, Ms. Redford also serves as a strategic advisor to public companies operating in volatile political climates to assess risk and ensure regulatory compliance, particularly as it relates to Extractive Industries Transparency Initiatives and Community Benefits Agreements for affected Indigenous people.

Previously, Ms. Redford served as Premier of Alberta from 2011 to 2014 and as Minister of Justice and Attorney General from 2008.

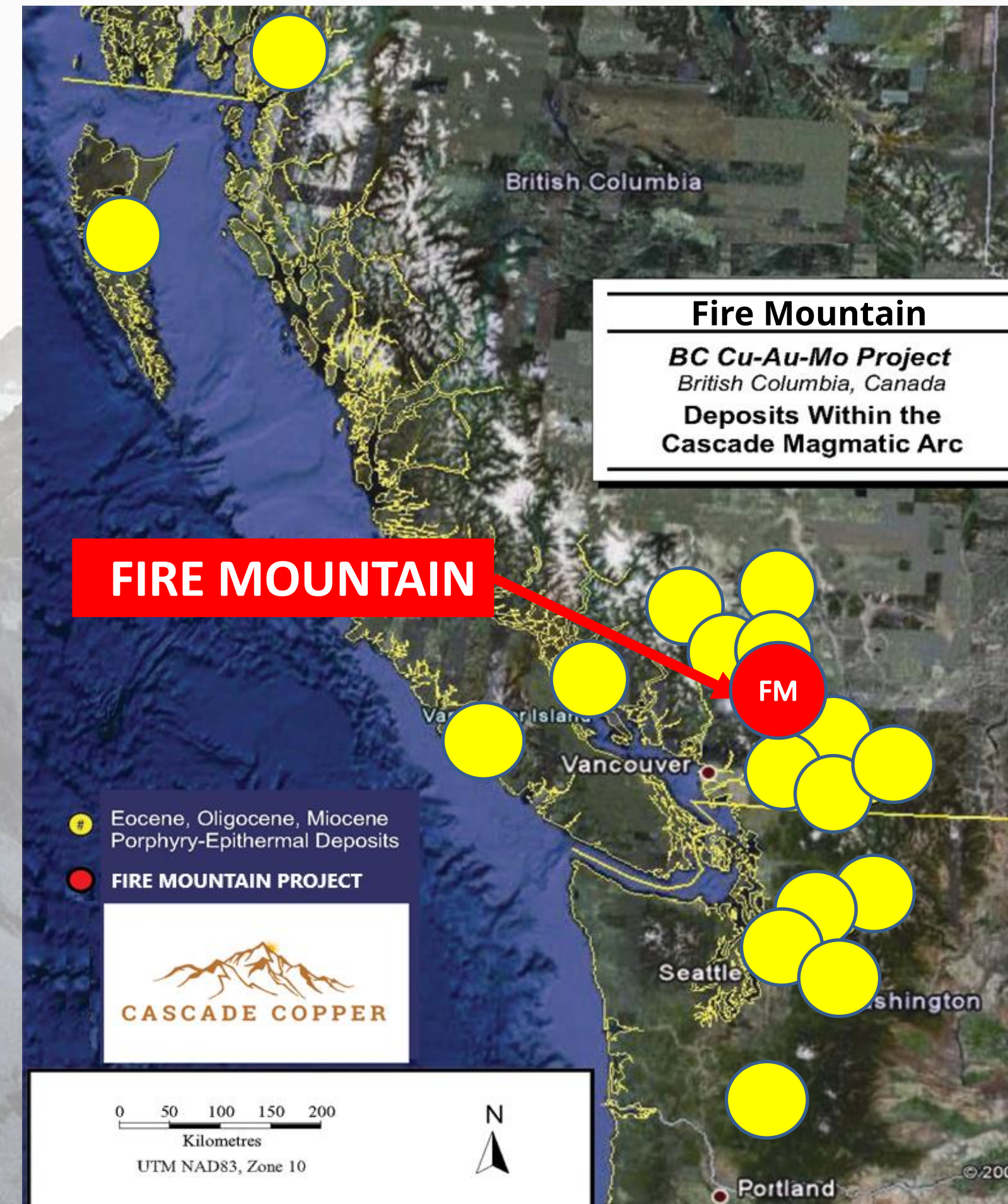
Ms. Redford holds a law degree

FIRE MOUNTAIN Cu-Au-Mo PORPHYRY PROJECT



Project Location & Nearby Significant Deposits

- A large (7,913 ha), “Flagship” quality Project located ~220km from Vancouver in the Coastal Mountain Belt along trend with multiple Cu-Au-Mo deposits across Alaska, British Columbia, and Washington State including the Glacier Peak (1.7Bt @ 0.334% Cu, 0.015% MoS₂) and Margaret (523Mt @ 0.36% Cu, 0.011% Mo, 0.24 g/t Au) deposits (Singer et al. 2008) in upper Washington State
- Emplaced within the Gambier Group, host to numerous prospects and past producers consisting of Cu-Au porphyry, skarn, vein-gold, and VMS mineralization
- Analogous to regional producers including the nearby Copper Mountain Mine with a total mineral resource of 1.1Bt @ 0.22% Cu, 0.09 g/t Au, and 0.64 g/t Ag as of August 1, 2022 (2022 NI 43-101 Technical Report for the Copper Mountain Project)



FIRE MOUNTAIN Cu-Au-Mo PORPHYRY PROJECT



Project Benefits

- Large land package with widespread porphyry-related alteration, veining, and mineralization including 10 documented Minfile occurrences
- Low Risk / Low Capital Critical Metals Play
- Severely underexplored
- Significant surface results with no drilling and little historic work presents an opportunity for “cheap” early-stage discovery
- Wide open, unglaciated terrain allows mobility for geophysical surveys and groundwork
- Mining Friendly Jurisdiction
- Located along an all-season maintained major logging road system with high-tension power and an all-season high-flow water source with IPP “run-of-river” Hydropower

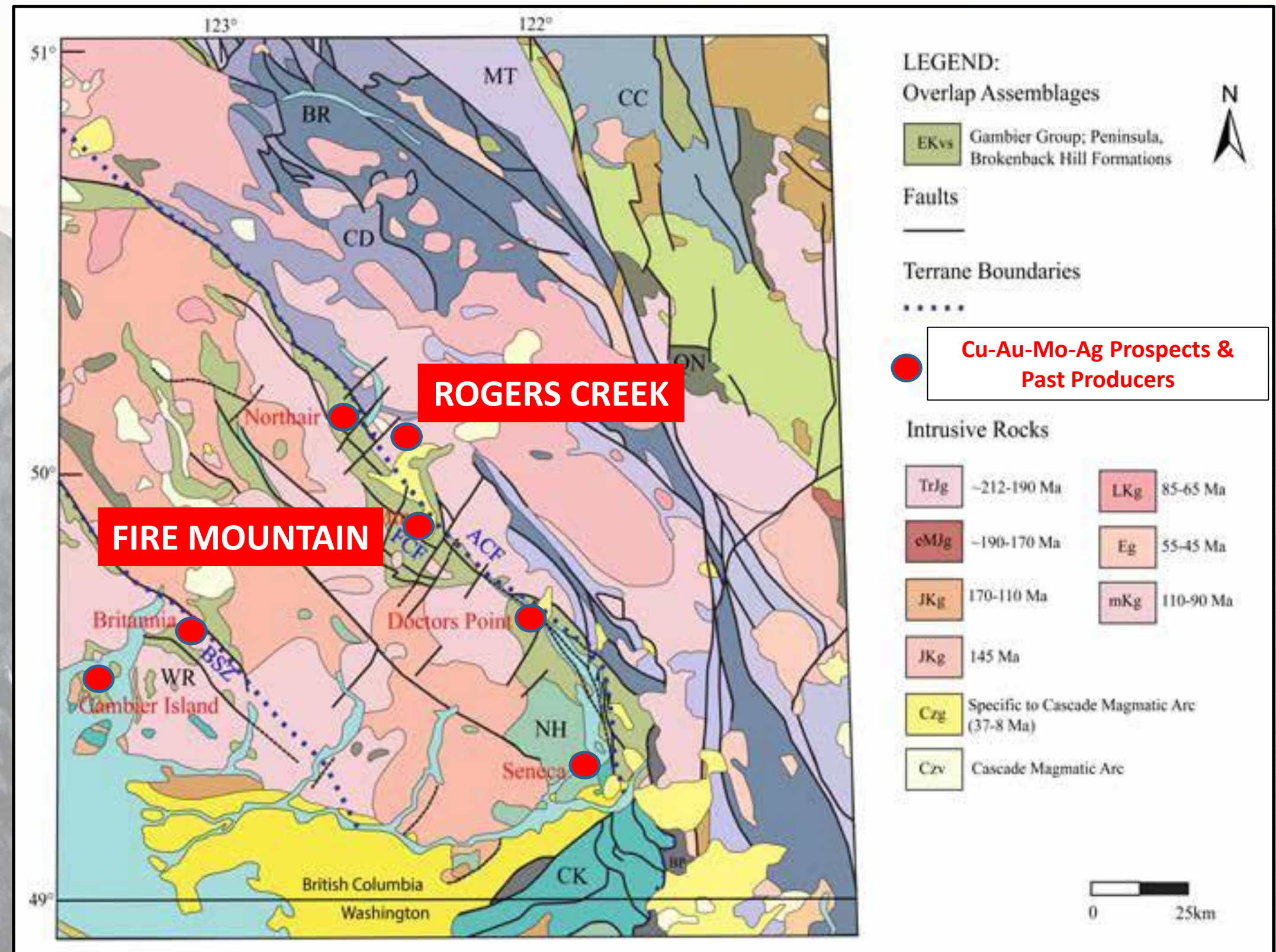


FIRE MOUNTAIN Cu-Au-Mo PORPHYRY PROJECT



Regional Geology

- Major NW-SE longitudinal structures – potential crustal-scale marking the eastern boundary of the Wrangellia Terrane, could provide structural control of ore as at the Copper Mountain-Ingerbelle Deposit
- Bend in steeply-dipping major structures (FCF=Fire Creek Fault) with distinct calcareous sedimentary and volcanic host rocks within the historically productive Gambier Group – excellent stratigraphic, geochemical, and structural ground preparation for the concentration of Cu-Au mineralization
- Large NE structures - including the regionally extensive Glacier Creek Fault, likely act as conduits for mineralized Tertiary intrusives such as the proximal Rogers Creek Pluton



FIRE MOUNTAIN Cu-Au-Mo PORPHYRY PROJECT



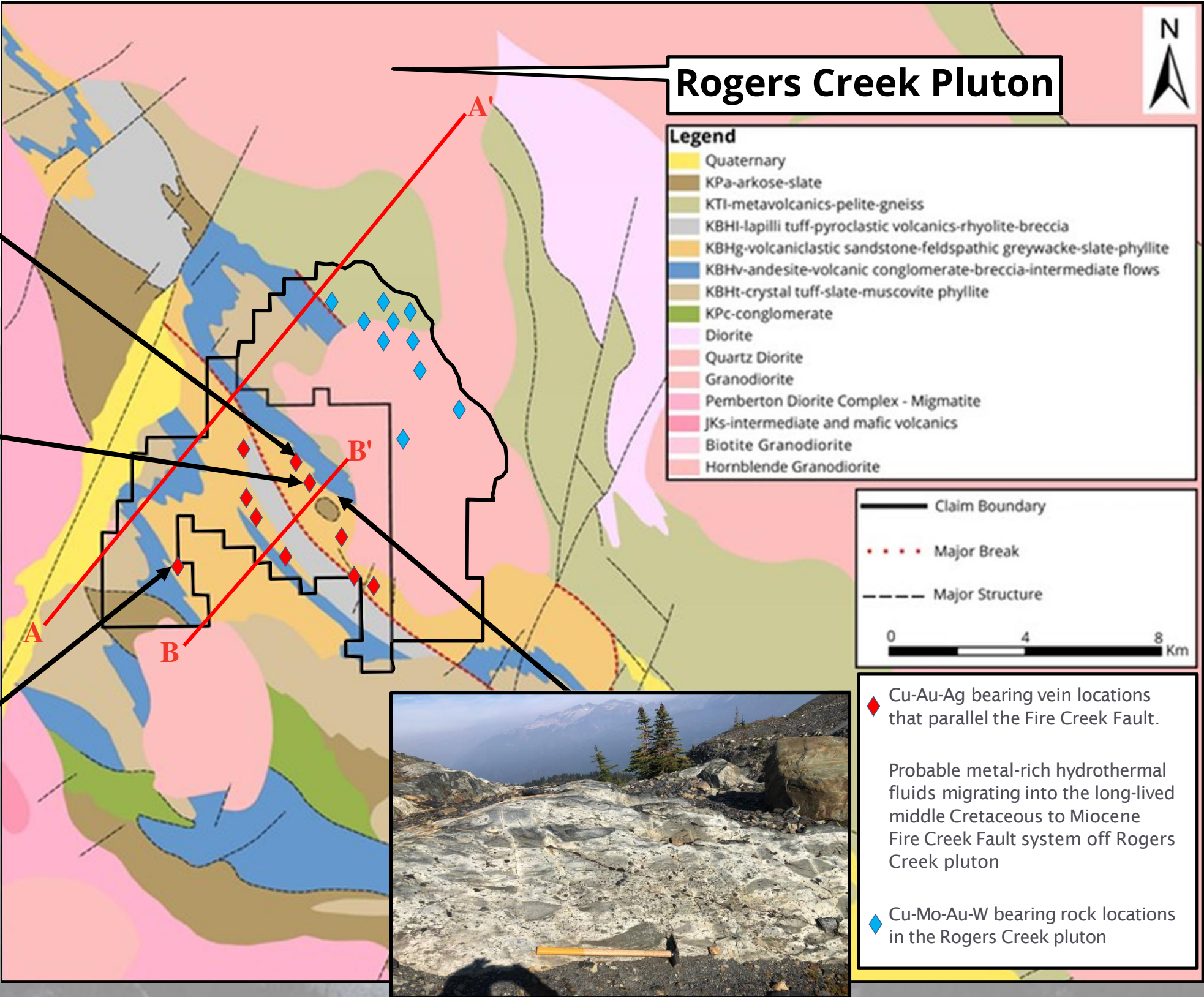
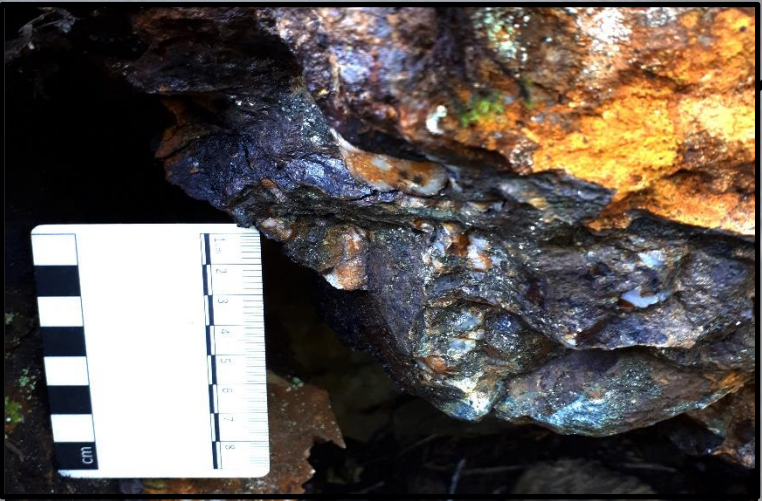
Project Exploration Highlights

- Recent discovery of porphyry-related veining, alteration, and mineralization assaying up to 14.96 g/t Au, 1.58% Cu, and 52 g/t Ag in quartz-magnetite-chalcopyrite-epidote assemblage vein sets in multiple orientations
- Historic trenching of tuff breccia on southern flank assayed up to 1.4 g/t Au, 0.91% Cu, and 19 g/t Ag
- Historic tuff breccia rock samples assayed up to 3.91g/t Au, 0.21% Cu, and 11 g/t Ag
- Historic quartz-vein stockwork samples assayed up to 4.16 g/t Au, 1.88% Cu, and 65 g/t Ag
- Historic chip sampling of the NW-trending, ~1.2m wide by 300m+ long, ribboned quartz Money Spinner vein assayed 26.25 g/t Au while another parallel vein system ~200m east assayed 13.63 g/t Au
- Historic soil and rock sampling within the Rogers Creek Pluton proper ~2-3km east of the 2019 discovery outlined three distinct 1-2km diameter wide zones of significant Cu-Mo-Au-W-Bi porphyry pathfinder element associations at northeast structural intersections along a 7km major north-northwest arc-parallel fault system
- The minimal prospecting and sampling of the two northern zones within the Rogers Creek Pluton discovered multiple showings of copper-molybdenum mineralization along new logging roads. Molybdenite +/- chalcopyrite are observed in veins and on fractures and joint planes with values up to 1.56% Cu, 3.84 g/t Au, 75 g/t Ag, and 241 ppm Mo in rock grab samples.

FIRE MOUNTAIN Cu-Au-Mo PORPHYRY PROJECT



Local Project Geology

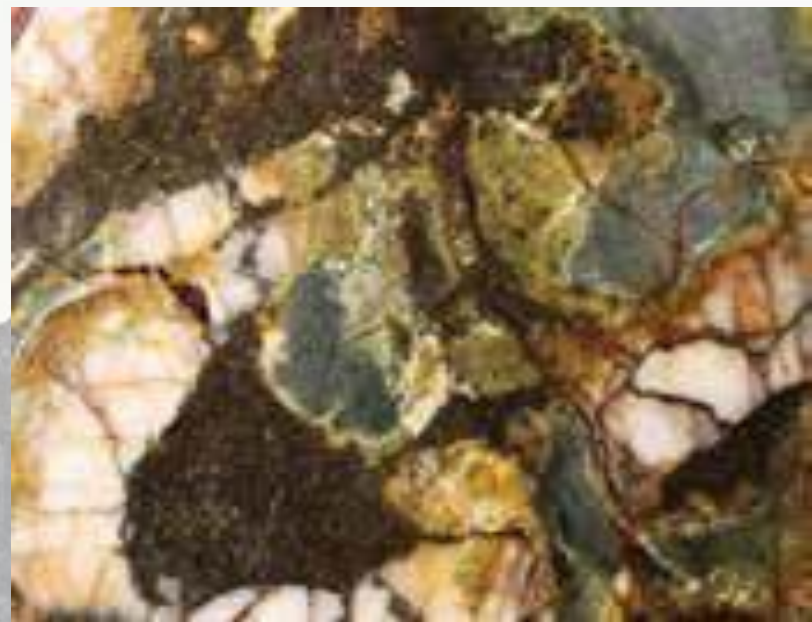


- **Contacts between dacitic tuff breccia, calcareous tuff, and andesite volcanic breccia (KBHv/KBHg/KBHv) are excellent stratigraphic and geochemical controls for hydrothermal Cu-Au mineralization related to the Rogers Creek Pluton**
- **Large-scale syncline within a jog of the Fire Creek Fault results in excellent ground preparation for strong structural controls of metal-rich hydrothermal fluids from the Rogers Creek Pluton**

FIRE MOUNTAIN Cu-Au-Mo PORPHYRY PROJECT



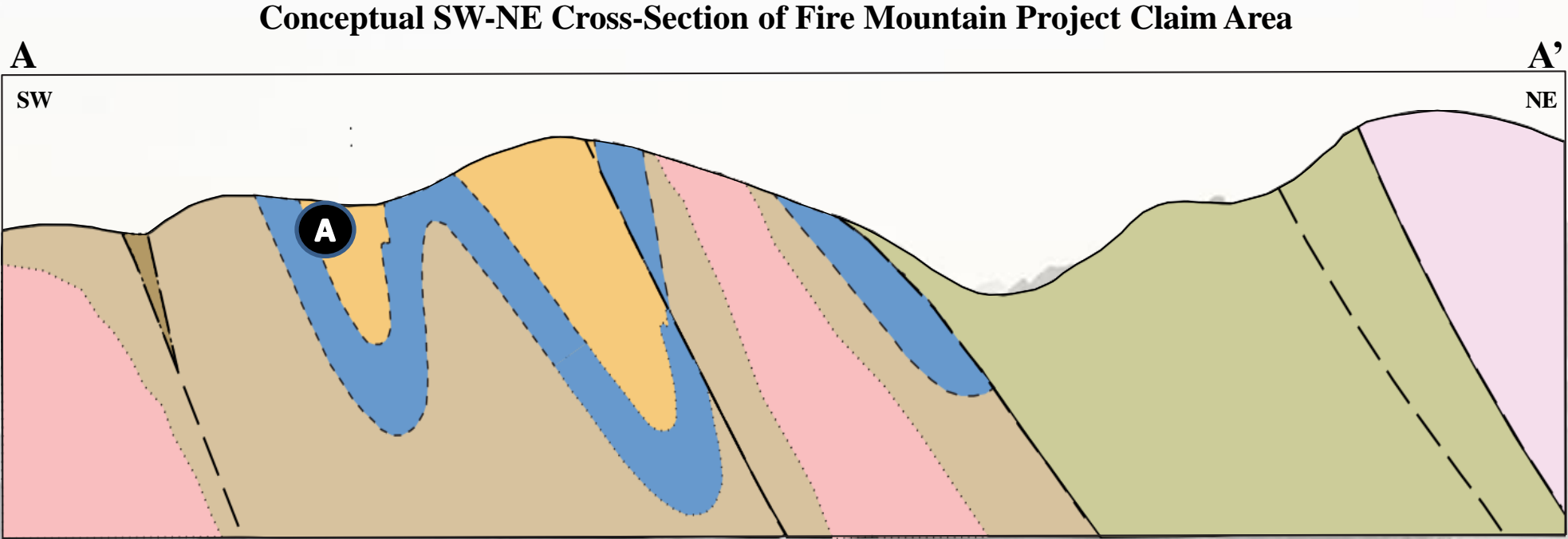
Local Project Stratigraphy



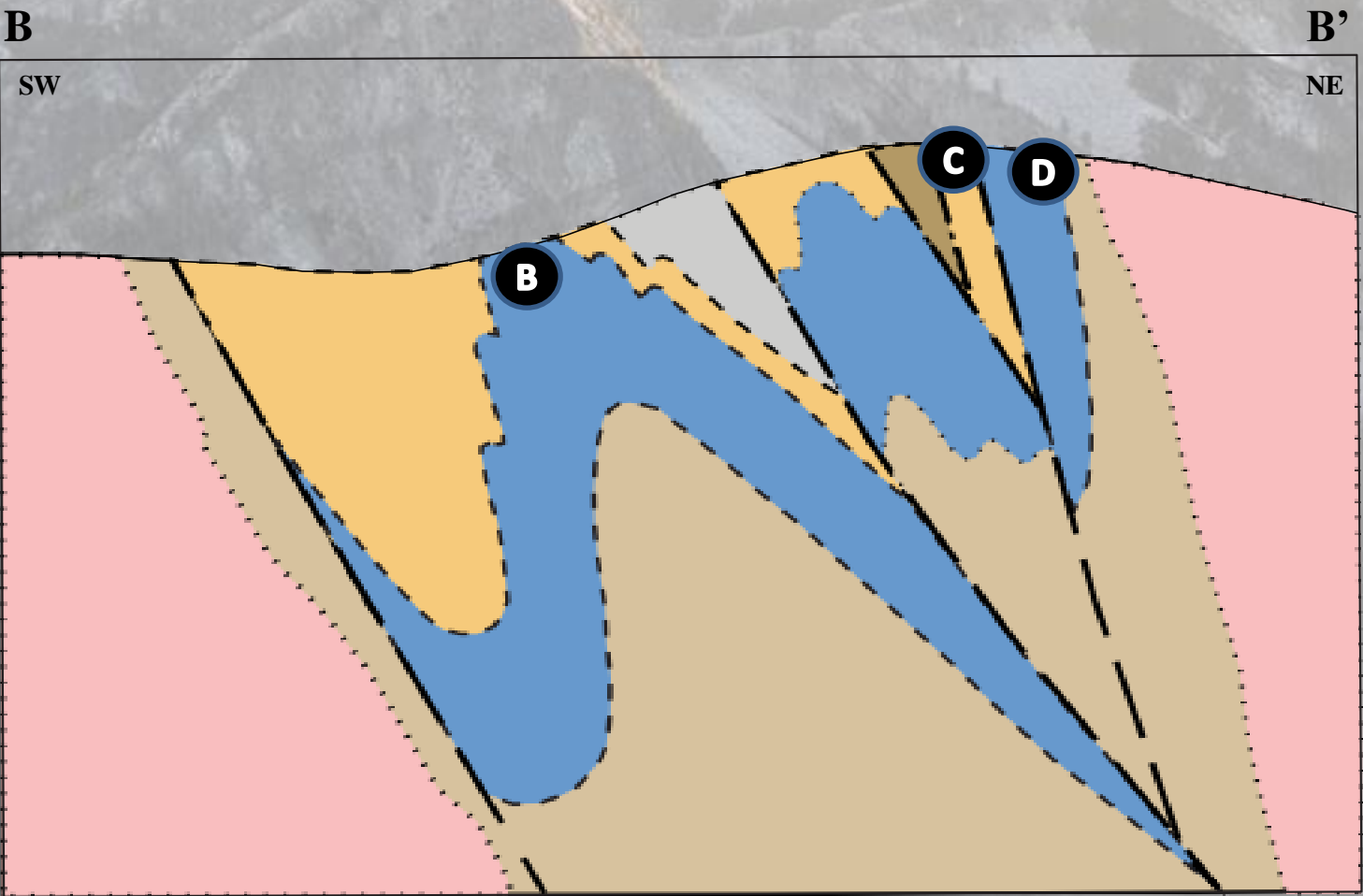
A) NW-trending Cu-Au brecciated quartz vein and Potassic Alteration



B) Volcanic breccia with sulfide replacement of dacitic tuff breccia



C) Magnetite-chalcopyrite-epidote alteration of volcaniclastics

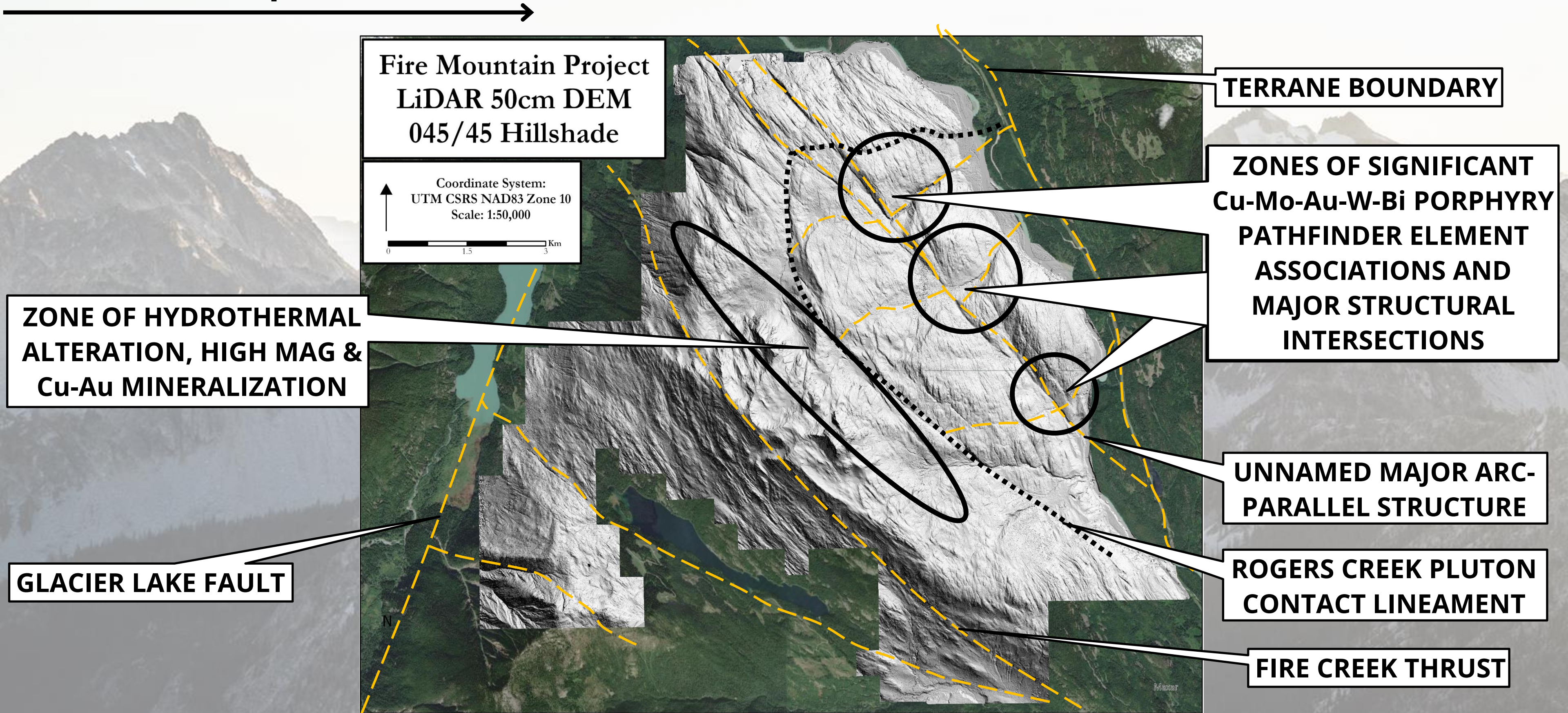


D) Massive Cu-Au magnetite veins with epidote alteration

FIRE MOUNTAIN Cu-Au-Mo PORPHYRY PROJECT



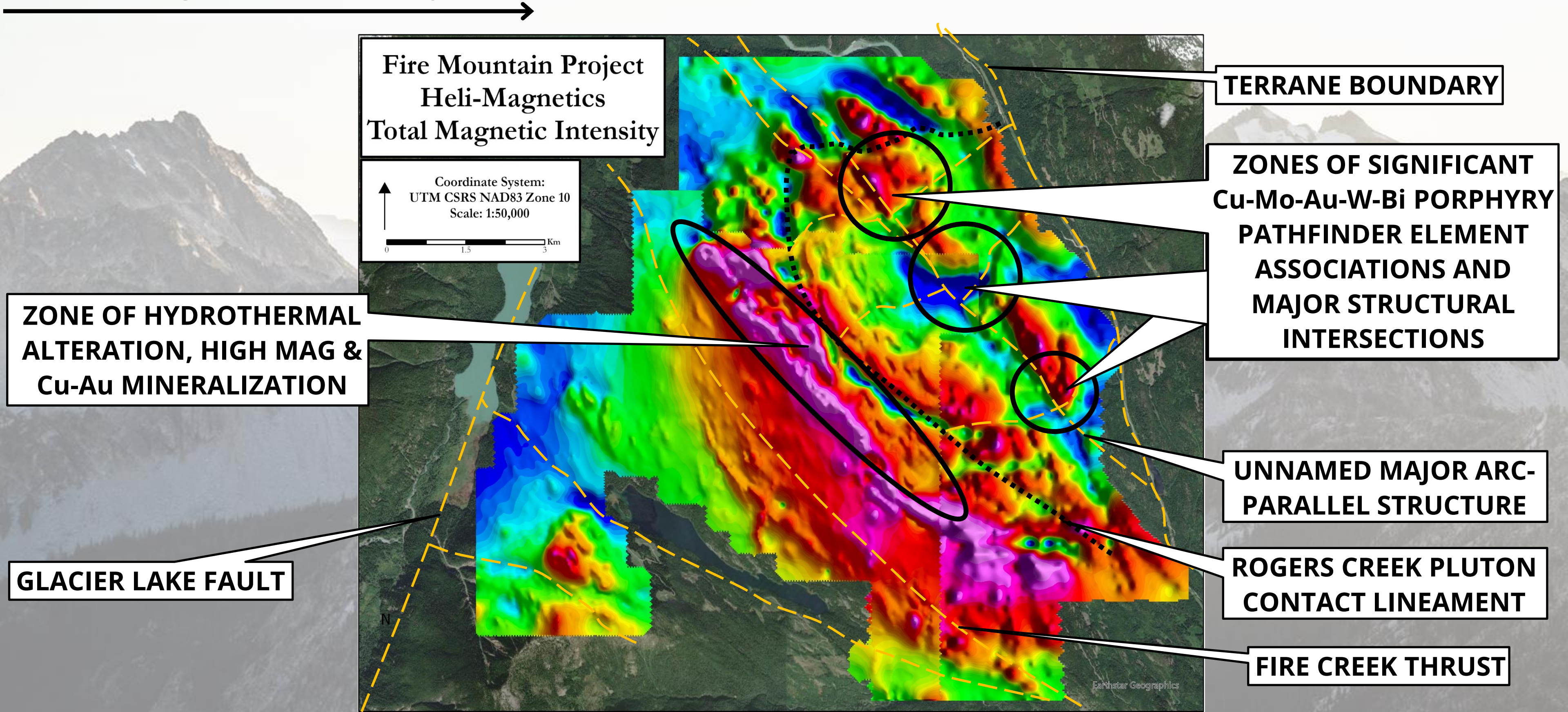
Structural Preparation



FIRE MOUNTAIN Cu-Au-Mo PORPHYRY PROJECT



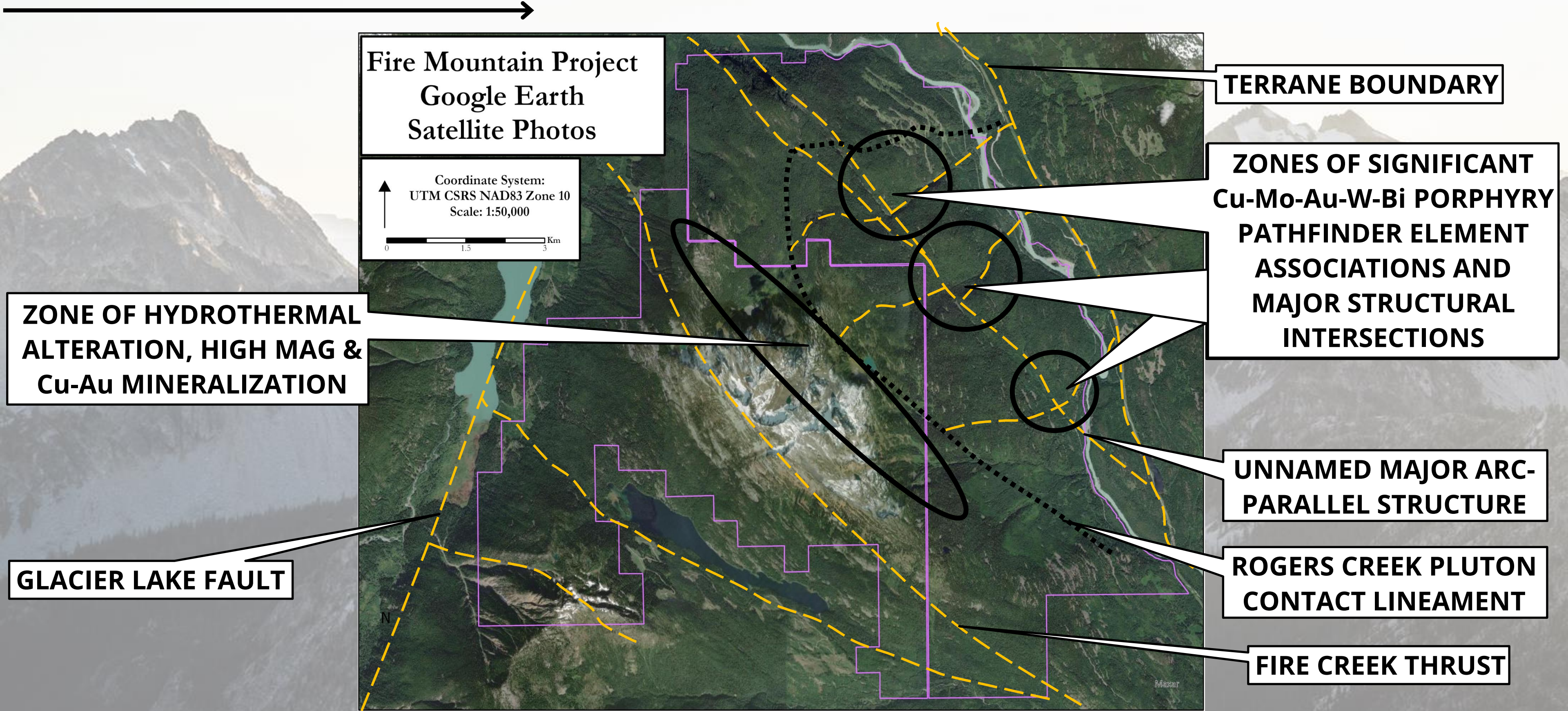
Total Magnetic Intensity



FIRE MOUNTAIN Cu-Au-Mo PORPHYRY PROJECT



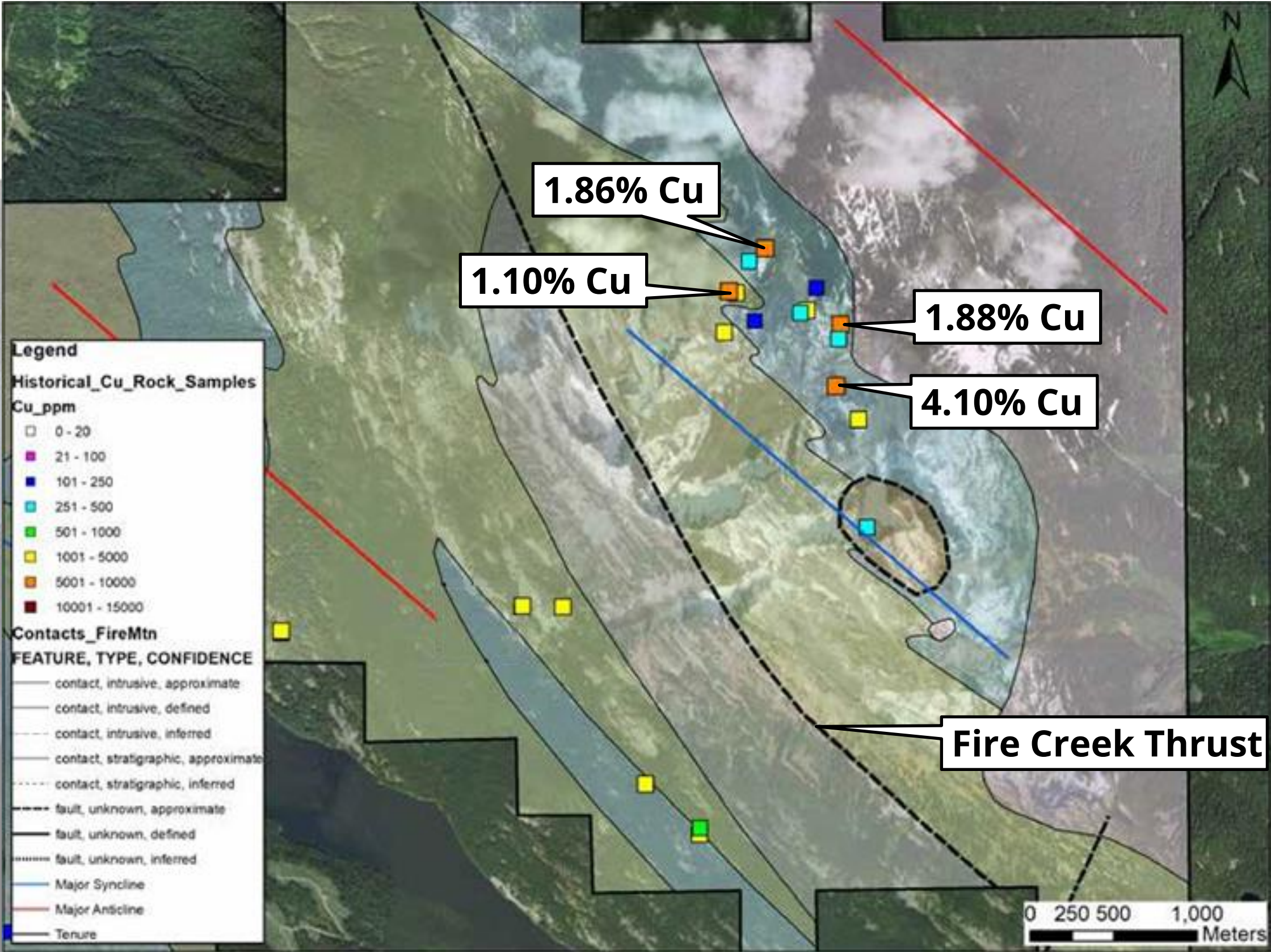
Google Earth Satellite Imagery



FIRE MOUNTAIN Cu-Au-Mo PORPHYRY PROJECT



Historic Copper in Rocks Over Geology



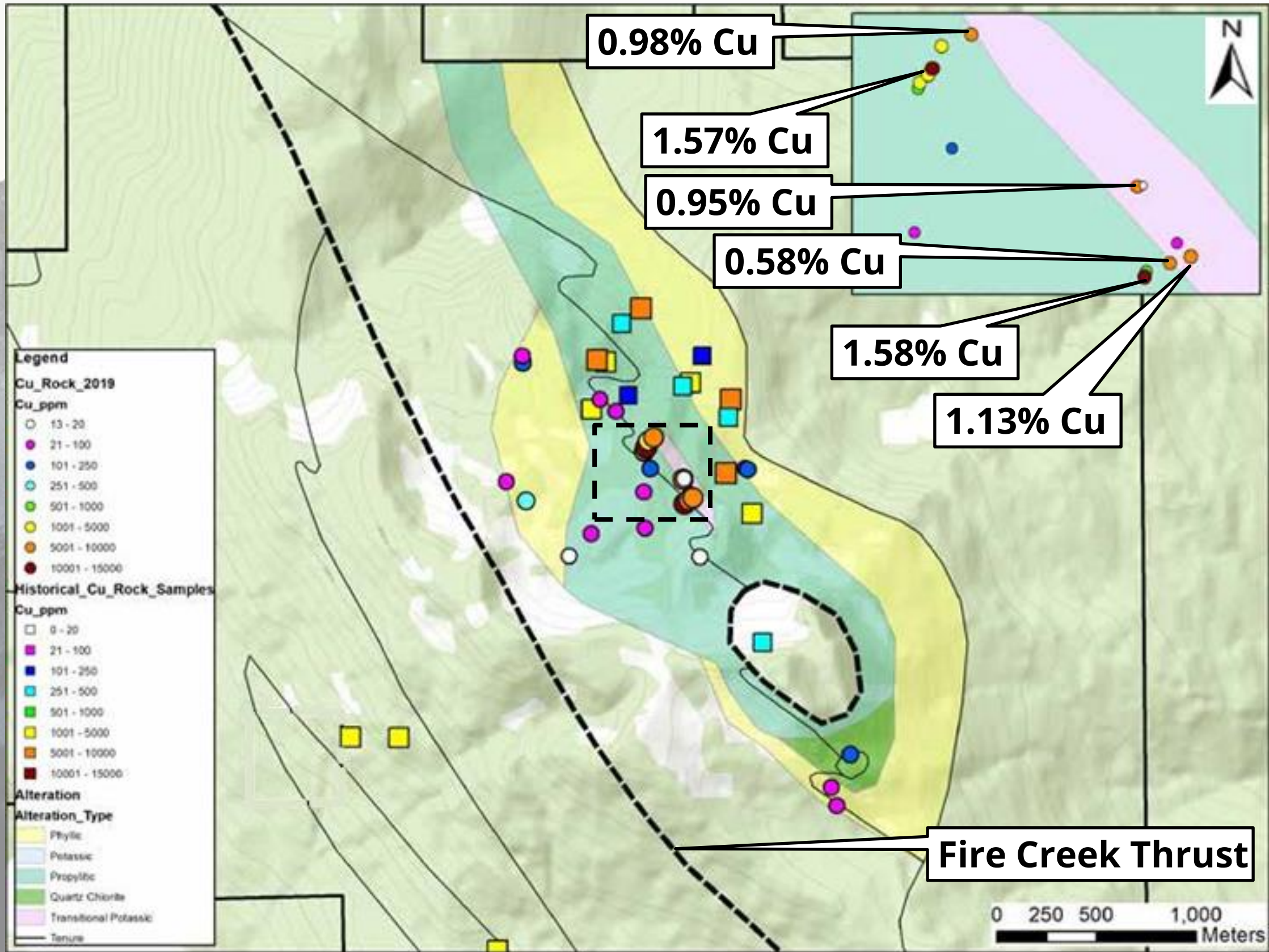
- Cu is concentrated within quartz-magnetite veins and disseminated within altered dacitic tuff breccia and overlying calcareous tuff.
- The moderate Cu-Au and moderate to strong Cu-Ag statistical correlation is analogous to the Copper Mountain-Ingerbelle deposit.



FIRE MOUNTAIN Cu-Au-Mo PORPHYRY PROJECT



New Copper in Rocks Discovery Over Alteration



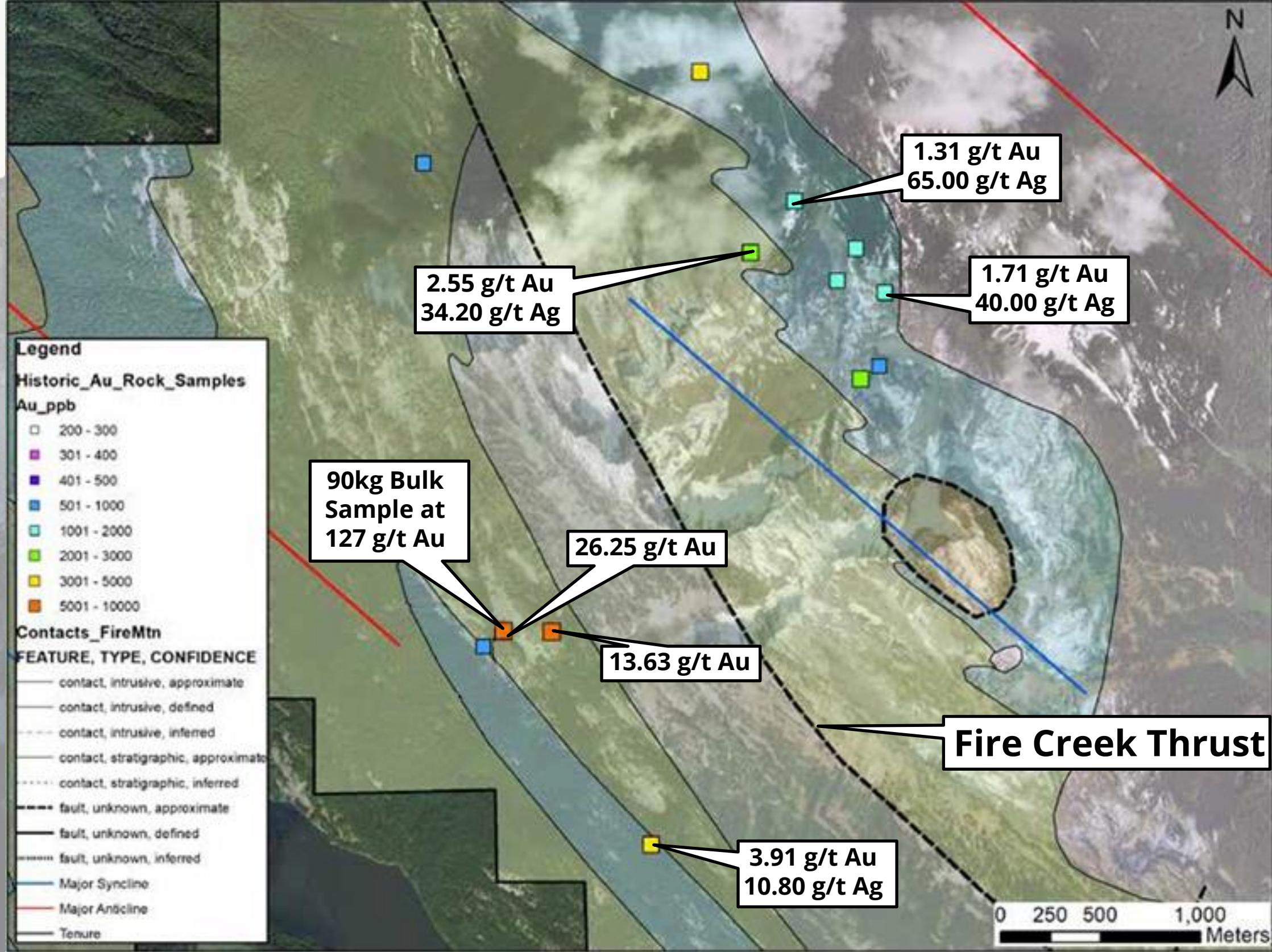
- Sheeted Cu-Au quartz-magnetite-chalcopyrite-pyrite veins over a multi-kilometre trend
- Propylitic alteration with hematite-magnetite-chalcopyrite with intense siliceous alteration
- Propylitic alteration of tuff breccia with veins of magnetite-chalcopyrite-pyrite



FIRE MOUNTAIN Cu-Au-Mo PORPHYRY PROJECT



Historic Gold in Rocks Over Geology



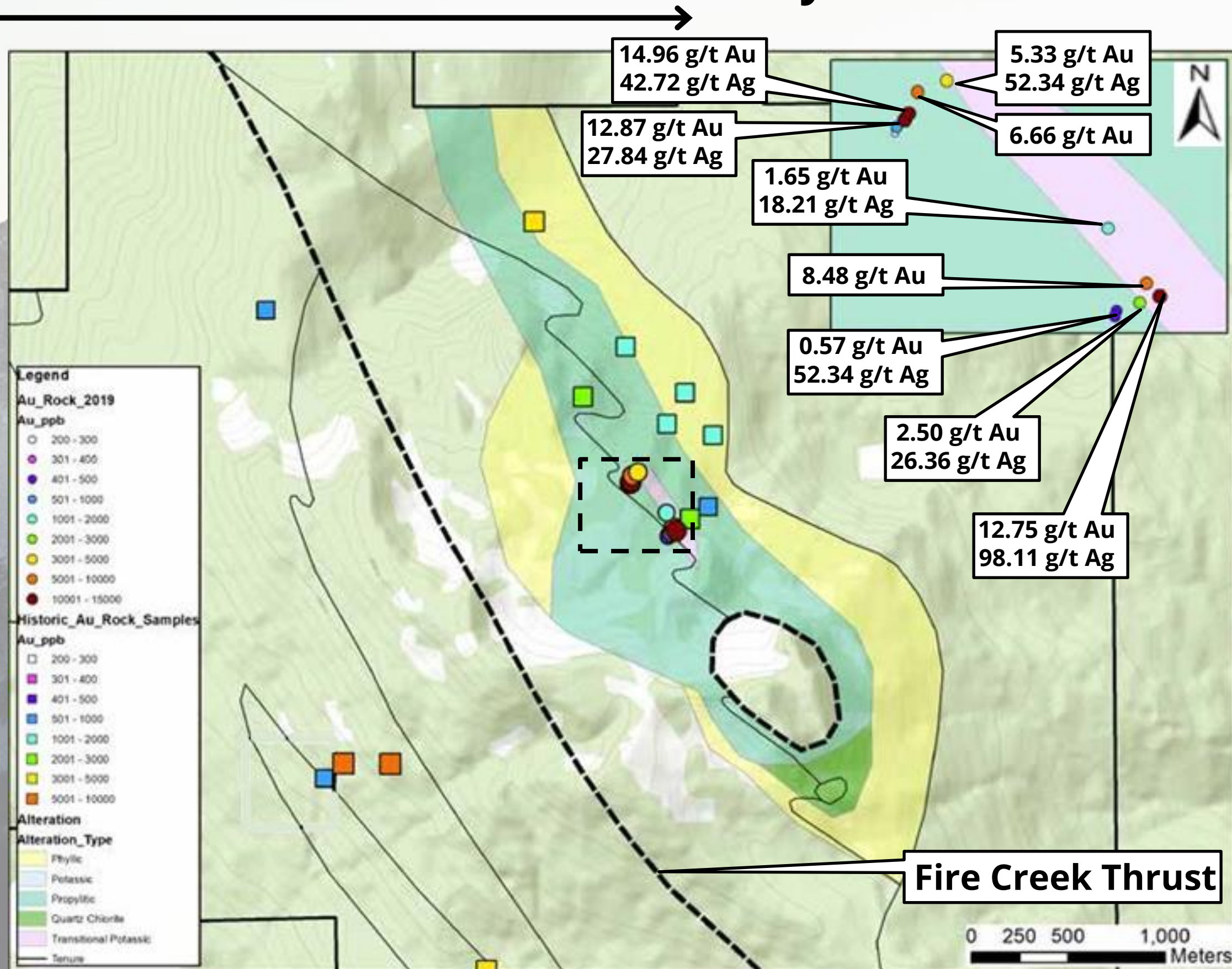
- Structural Cu-Au veins never drill tested
- Veins occur in both the hanging and foot wall of the Fire Creek Thrust Fault
- Historic chip samples up to 26.25 g/t Au at the Money Spinner and 13.63 g/t Au from another vein to the east.



FIRE MOUNTAIN Cu-Au-Mo PORPHYRY PROJECT



New Gold/Silver in Rocks Discovery Over Alteration



- Recent discoveries include Cu-Au magnetite veining within a strongly sheared corridor paralleling the Fire Creek Fault
- Significant 10km long unexplored coincident magnetic anomaly trend to the northwest and southeast in which the system remains open



FIRE MOUNTAIN Cu-Au-Mo PORPHYRY PROJECT



Project Summary Highlights

- ~7900 ha along a crustal-scale fault system proximal to the Miocene-aged Rogers Creek Pluton
- Largely underexplored ~13 km section along a major dilational jog with associated Tertiary intrusives
- Analogous to the Cu-Au porphyry-related deposits at the Copper Mountain - Ingerbelle Projects
- ~10 km long x ~2.5 km wide magnetic anomaly outlining prospective Cu-Au-Ag mineralization that exploits the Fire Creek Fault system structures and haloes the Rogers Creek Pluton
- Recent exploration has outlined a drill-ready target zone of hydrothermal alteration within a propylitic envelope, with coincident rock sample assays up to 15 g/t Au, 1.58% Cu, 52 g/t Ag, 0.12% Co
- Minimal historic sampling within the Rogers Creek Pluton on Fire Mountain East outlined at least three distinct 1-2km diameter wide zones of significant Cu-Mo-Au-W-Bi porphyry pathfinder element associations with coincident magnetic anomalies at major north-northwest arc-parallel and northeast structural intersections
- A wide-open, unglaciated, and mostly alpine to old growth land package with no previous drilling, IP, CSAMT, EM or other useful geophysical survey gives the potential for a cheap, early-stage potential major discovery

Contact Our Team

Jeff Ackert
President, CEO & Director



1-613-851-7699



jackert@cascaDECOPPER.com

Shannon Baird
VP Exploration & Director

1-604-355-7117

sbaird@cascaDECOPPER.com

Darcy Christian
Director

1-587-777-9072

dchristian@cascaDECOPPER.com



Suite 820 – 1130 West Pender St.

Vancouver, B.C. – V6E 4A4

www.cascadecopper.com